

## HOLD ON TO YOUR HEAT

### **CHANGES WITH A COST** (but you save eventually)

(See over for cost-free actions)

Changes roughly in order of effectiveness in reducing CO<sub>2</sub> emissions but each house is different.

- Increase the insulation in your loft. Heat rises, so stop it going through the roof.
- Install double-glazed windows. (Triple-glazing is even better.)
- Insulate your outside walls. Cavity wall insulation is more straight-forward, if your house is not too old to have cavities.
- Replace the boiler, if more than 15 years old. (Electric) air-source heat pumps are more efficient but the house must be insulated first.
- Install thermostatic radiator valves. Some rooms can be left cooler, when not in use.
- Insulate your hot water cylinder.
- Put panels behind radiators on external walls (e.g. foil on a board).
- Draught proof around doors & windows; cover letter boxes & keyholes.
- Leave the curtains open where there is a radiator and install a blind in the window recess instead. (Keeps the heat away from the window.)
- Install a curtain over the front door.
- With high ceilings, a shelf above a radiator stops heat rising so quickly.

For more advice: [energyefficientbeeston.weebly.com](http://energyefficientbeeston.weebly.com)



## HOLD ON TO YOUR HEAT

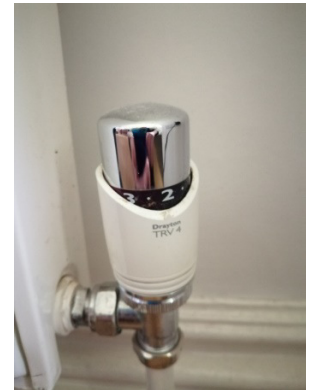
### **CHANGES WITH A COST** (but you save eventually)

(See over for cost-free actions)

Changes roughly in order of effectiveness in reducing CO<sub>2</sub> emissions but each house is different.

- Increase the insulation in your loft. Heat rises, so stop it going through the roof.
- Install double-glazed windows. (Triple-glazing is even better.)
- Insulate your outside walls. Cavity wall insulation is more straight-forward, if your house is not too old to have cavities.
- Replace the boiler, if more than 15 years old. (Electric) air-source heat pumps are more efficient but the house must be insulated first.
- Install thermostatic radiator valves. Some rooms can be left cooler, when not in use.
- Insulate your hot water cylinder.
- Put panels behind radiators on external walls (e.g. foil on a board).
- Draught proof around doors & windows; cover letter boxes & keyholes.
- Leave the curtains open where there is a radiator and install a blind in the window recess instead. (Keeps the heat away from the window.)
- Install a curtain over the front door.
- With high ceilings, a shelf above a radiator stops heat rising so quickly

For more advice: [energyefficientbeeston.weebly.com](http://energyefficientbeeston.weebly.com)

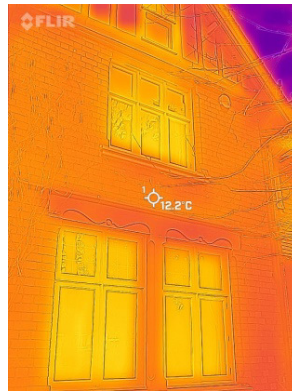


## HOLD ON TO YOUR HEAT

### CHANGES WITH NO COST

(You'll definitely be saving money straight away.)

- Turn down the thermostat by 1°C (wear a jumper).
- Avoid having furniture too close to radiators. (Lets warm air circulate more easily.)
- Avoid having curtains in front of radiators (tuck them behind instead). (Keep heat in the room and away from window.)
- Turn down radiators in unused rooms.
- Set the central heating timer to go off half an hour before you usually go out. (Rooms may stay warm for even longer.)



During external insulation work and after work finished.

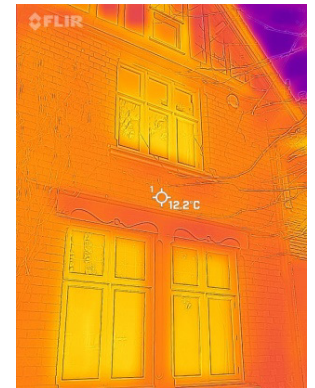
Find out more at: [greeninginbeeston.weebly.com](http://greeninginbeeston.weebly.com)

## HOLD ON TO YOUR HEAT

### CHANGES WITH NO COST

(You'll definitely be saving money straight away.)

- Turn down the thermostat by 1°C (wear a jumper).
- Avoid having furniture too close to radiators. (Lets warm air circulate more easily.)
- Avoid having curtains in front of radiators (tuck them behind instead). (Keep heat in the room and away from window.)
- Turn down radiators in unused rooms.
- Set the central heating timer to go off half an hour before you usually go out. (Rooms may stay warm for even longer.)



During external insulation work and after work finished.

Find out more at: [greeninginbeeston.weebly.com](http://greeninginbeeston.weebly.com)